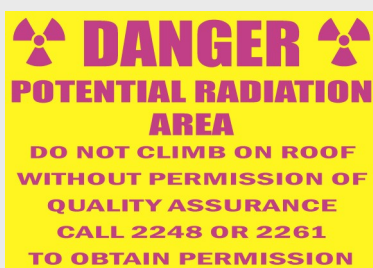
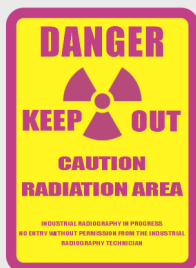




## Obey the Signs and Don't Cross the Lines!

Radiography lines/signs is a topic we must evergreen periodically to help ensure awareness and sensitivity to the vital importance of these tools. Some important background: our radiation safety posture is based on the principle of ALARA “as low as reasonably achievable”. The three basic protective measures in radiation safety: time, distance and shielding. Our Radiography Team carefully plans every job focusing solely on the safety of YOU and our fellow shipbuilders. We calculate the distance of the boundary, utilize shielding strategies and establish these important boundaries to optimize the distance between YOU and the source. Just like a tank boundary, the radiography boundaries represent a plane that cannot be crossed. Consider this plane to be a solid wall where the best strategy is to stay 6-10 feet away. In addition to floor-level boundaries, shipmates are reminded they cannot access any rooftop without permission from Quality Assurance Industrial Radiography. Signs are posted at all roof access points as a reminder of this policy.

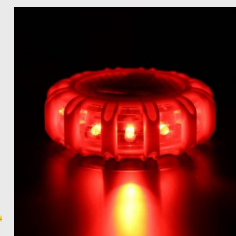
It is our training that educates us on the rules. Much like the PPE signs in production areas, it's these radiography signs that are the constant reminders of what we learned in our training. However, the overall desired behavior of hazard awareness is established when we demonstrate what we learned by watching for and obeying the warnings of these important visual aids.



As Quonset Point continues to grow and increase our volume, the demands on all of us continue to increase. Various Trades are working extended shifts and alternate work weeks to meet demands causing overlap with Radiography Services on third shift. This introduces great risk to the safety of our shipbuilders and our ability to perform our RT inspection services safely. With increased Trade velocity, we will have to increase the number of deployed RT Crews. This will result in larger RT areas being taken and will require us to maximize our RT Crew time on the floor. All Trades are asked to be mindful that the RT expanded areas and extended times may be different from what

we're all used to seeing but is required so Radiography meets the velocity demands of our business and we all support immediate Navy needs.

Helpful reminder, our lines are magenta and yellow and we continue to utilize additional flashing red LED lighting to help you all see our boundaries each night. If you see these lines or flashing red lights, stop, stay back and be respectful. Please obey these warnings.



There is no reason that you should ever have to cross into an RT restricted area. Remember, just reaching over the line is a line crossing. Crossing an XRAY boundary is a major safety infraction that will result in discipline (up to and possibly including immediate termination). These lines and signs have never been more important to you and the safety of those around you. If you have any questions, ask your supervisor or one of the radiography personnel who can assist you.

It is our goal to ensure that our shipmates remain safe, with a healthy respect for Radiation Safety. Staying outside of these RT boundaries will ensure you remain safe from the risk of radiation exposure. All we ask of you is to obey our radiography signs at all times and never cross these radiography boundary lines.

Be well, stay safe.

*Danielle L. Pereira*

**Danielle Pereira**  
Director of Quality Assurance

### FOLLOW ELECTRIC BOAT SOCIAL MEDIA CHANNELS

 Facebook: General Dynamics Electric Boat

 YouTube: GD Electric Boat

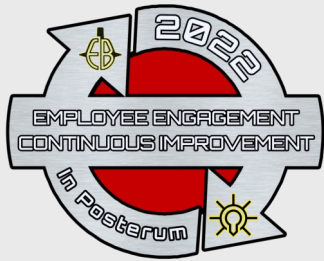
 Twitter: @GDElectricBoat

 LinkedIn: General Dynamics Electric Boat

 Instagram: gdelectricboat

 EB Landing: www.EBLanding.com

The QP WIB is produced by EB Communications.  
To submit ideas, contact [rmarques@gdeb.com](mailto:rmarques@gdeb.com)



## CONTINUOUS IMPROVEMENT



Defects



Overproduction



Waiting



Not utilizing  
Employees



Transport



Inventory



Motion



Extra  
Processing

Waste is any action or step in a process that does not produce value, meaning that the customer (in EB's case, the Navy) is not willing to pay for it. There are eight types of waste that can best be remembered by the acronym **DOWNTIME**:

**D** efects: Any kind of rework, incorrect information, or scrap

**Example:** Failed welds, RIPOUTS, TIR UNSATs

**O** verproduction: Producing too much of a product before it is needed

**Example:** Ordering more material than what is required

**W** aiting: Wasted time waiting for the next step in a process

**Example:** A trade waiting on a support service to start work

**N** on-Utilized Employees: Underutilizing people's talents, skill, and knowledge

**Example:** An experienced mechanic performing paperwork

**T** ransportation: Unnecessary movement of products or material

**Example:** Moving items from a shop to storage to a shop

**I** nventory: Excess products and materials not being processed

**Example:** A bin with 10 times more parts than needed

**M** otion: Unnecessary movement by people

**Example:** Walking material from one side of a shop to another

**E** xtra Processing: More work or higher quality than is required by the customer

**Example:** Over welding. Producing welds larger than the plan requirement

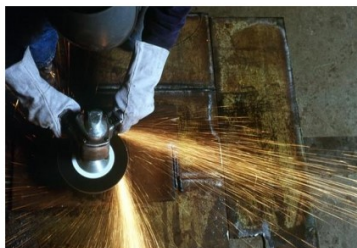
Do you recognize any of these types of **waste** in your area? What can you do to help **eliminate** it? How can you **improve** your work area? In future WIBs, we will discuss each of the eight wastes in more detail, with potential solutions to minimize their impact.

Have a process improvement idea, or simply just want a board to bounce ideas off? Discuss your idea with your Supervisor. If additional resources are required for implementation, your Supervisor can contact Crystal Sherman at [csherman@gdeb.com](mailto:csherman@gdeb.com).



## QUONSET POINT APPRENTICESHIP PROGRAM

Starts May, 2023



### PROGRAM OVERVIEW

Rotations offered in Structural, Pipefitting, Electrical, OSM and Steel Processing

This accelerated program will take three years to complete while working full-time.

- Graduates earn an Associate Degree in Applied Science in Technical Studies (A.A.S.-T.S.) from the Community College of Rhode Island.

### Info Sessions:

- 2/27/2023—9A Multipurpose Room 3:30pm
- 2/28/2023—9A Multipurpose Room 7:30am
- 3/1/2023—Employment Office 7:30am
- 3/2/2023—Employment Office 2:30pm, 3:30pm
- 3/3/2023—60 Side Cafeteria 7:30am
- 3/6/2023—60 Side Cafeteria 2:30pm, 3:30pm

Structural, Pipefitting, Electrical, OSM and Steel Processing trades only

No Shop Order Provided



### Minimum Qualifications

- Attend one of the info sessions (listed above) on your own time
- Current Hourly QP Employee
- One year experience in trade you are applying for
- Must possess a High School Diploma or GED

**DEADLINE TO APPLY IS FRIDAY MARCH 10TH**



Electric Boat Veterans Network

## EBVN Meet and Greet!

- Building 60 Cafeteria
- Wednesday, February 22
- 11:30am - 12:30pm

Stop by and meet your on-site representatives, ask questions, and sign up to be a member!

QP POC - Sianna McNulty  
smcnult1@gdeb.com

### Better Know VA/VPM Construction Engineering

In support of increased construction at QP, the VA/VPM construction engineering team has experienced significant growth as well – nearly doubling in size in the last year – and we want to spread awareness of the resources our team has available to operations.

Most people probably know us as the D460 Construction Engineering Team (or deckplate team) that answers Engineering Reports (ERs) and UNSATs when trades face an issue that normal shipbuilding procedures cannot resolve. While that's our bread and butter, answering nearly 2,000 ERs per year, the team is also available to answer any VIRGINIA Class engineering and design questions that might come up during construction but don't necessarily result in an ER. For example, if the design isn't clear and an isometric view would make the build easier to understand, we can produce it for you. Or if you're not clear if a repair can be performed in accordance with an MDD, reach out.

The core of the team is broken up by discipline, with engineers and designers available on 1st and 2nd shifts to support structural, mechanical, electrical and piping construction issues found during submarine construction. The team is fortunate to have an experienced design and engineering team with the majority of the team having over 10 years of experience on VA Class construction. See org chart below. Though the majority of the team is located in K60, we're just a phone call away and provide support to all of Quonset Point, including material related issues identified in the warehouses.

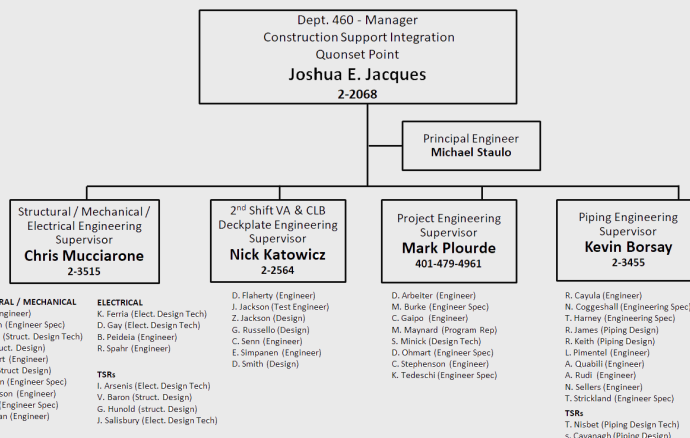
The team also has some members completely dedicated to operations support outside of the ER process, specifically the Technical Support Representatives (TSRs) and Project Engineering Team, with many of these engineers and designers currently embedded with operations.

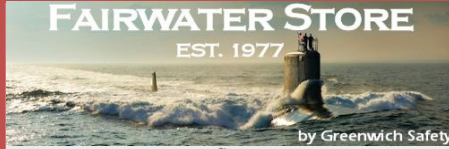
- The TSRs are deployed throughout QP in the following locations: Trailer 19 behind 2003 (supporting both

waterfront and 9 series building), Building 2029 (Lowes) and the D904 Pipe Shop. They are available to review any electrical, structural or piping design questions that operations faces to determine if an ER is required to resolve the issue. We've recently created a dedicated email for Operations to contact the Trailer 19 TSR team: QPTSRs@gdeb.com

- The Project Engineering Team is currently focusing on first time builds for VPM and assisting with incorporating lessons learned into the build process. If you're working a first time VPM build, you've probably already met the Project Engineering representative cognizant of that structure.

The team now has more resources than ever and is looking to be as proactive as possible in resolving issues earlier in the construction process, so if you have a question, please reach out to any of our deployed resources or to the responsible engineering supervisor.





- Stay warm in any weather with a Carhartt Heavyweight zip up hoodie!
- Shop our latest selection of men's and women's safety boots!
- Anti-Fatigue Timberland insoles available in all sizes!
- Visit [Fairwaterstore.com](http://Fairwaterstore.com) for custom embroidered merchandise.

Hours of Operation  
7:30 am to 4:00 pm



**QP Weekly Safety Briefing**  
2/19/2023 – 2/25/2023

**200%**  
ACCOUNTABILITY



**TANK OR TOMB**

**PRIOR TO ENTRY READ AND COMPLY WITH ALL CONFINED SPACE POSTING REQUIREMENTS.**

**IF YOU ARE UNSURE OR DON'T KNOW YOUR RESPONSIBILITIES, DO NOT ENTER**

Week 8

**GENERAL DYNAMICS**  
Electric Boat

Policy Statement # 13: Electric Boat Corporation has established Occupational Health and Safety as the Company's Number One Priority.

**WHAT IS MINDFULNESS?**

When you think of mindfulness, you might be picturing someone sitting crossed legged on the floor with their eyes closed and their hands resting on their knees. This is only one way to experience mindfulness, through the practice of meditation. However, you can practice being mindful right now sitting at your desk, walking to a meeting, having lunch, and even during a conversation.

Mindfulness is the act of being present. Not looking to the future, or behind to the past. Psychology today provides a formal definition of mindfulness as "A state of active, open attention to the present. This state is described as observing one's thoughts and feelings without judging them as good or bad."

**CULTIVATING MINDFULNESS TAKES PRACTICE**

If you are interested in trying a short, mindful meditation, our Optum Wellness Coaches are offering free mindfulness sessions once a week telephonically. Simply dial in on **Wednesdays at 12:00 PM or 3:45 PM EST** for A Mindful Moment practice. Call in information is provided below.

**Phone number:** 1 952-222-7450

**Phone Conference ID:** 116 957 679#

To record your participation, please email [ebwellness@gdeb.com](mailto:ebwellness@gdeb.com) with the subject line "Mindfulness" and include your name, badge, and the date and time of the session you attended.

There is no S/O for this event, please attend on your own time.

