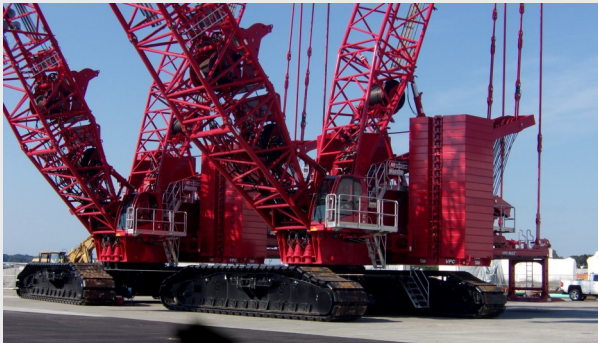




### What We Put Down, Most Could Never Pick Up

If you’ve been to the waterfront lately, you have likely noticed lots of changes. In preparation for the increased lifting and handling capability required for the COLUMBIA program, EBQP has recently invested in new heavy lifting equipment. Most notably, we have purchased two new Manitowoc model 650 VPC lattice boom cranes with the capacity to lift 1.85M lbs each to support turn-downs and pairings. We have also purchased new self-propelled modular transporters (SPMTs) and transfer cars to enable us to transport and ship super modules in excess of 4,000 tons. This will more than double our current handling capacity.



Receiving this new equipment is not only necessary to ensure Electric Boat’s success but also very exciting to the D920 Lifting and Handling team. Seeing this equipment on site is the manifestation of many years of hard work, planning, and capital investment.



“Our highly skilled and specially trained team is excited for our future and continue to perform as the best ship builders

in the world putting down what most of the world could never pick up!”, says Operations Manager Ernie Moreira.



These assets will allow us to continue to deliver the advantage that protects our sailors, our families, and our freedom for decades to come.

**Patrick Saggal**  
Senior Manager of Engineering

### DIRECTORY

*When calling from an outside line, remember to dial 268 and the last four digits of the numbers below.*

EMERGENCY.....	2-2222
FMO Office.....	2-2446/2-2626
Medical Dispensary.....	2-2244
Safety.....	2-2243
Security.....	2-2410
Benefits/Human Resources.....	2-3554
Employment.....	2-2400
Payroll.....	2-2646
Ethics Hotline.....	800-433-8442

**The QP WIB is produced by EB Communications. To submit ideas, contact [rmarques@gdeb.com](mailto:rmarques@gdeb.com)**

## Where to Go to Stay In-The-Know

There are several resources available for employees to stay up-to-date on what's going on at Electric Boat. Each day we receive tons of information, whether it be important announcements from leadership, notifications on upcoming events, reminders from the Benefits and Wellness team, or news related to recent accomplishments and company happenings. With new information coming in constantly, it's important to know where to look to stay in-the-know.

**Homeport** - The home base for all thing's EB. With built-in department and employee directories, links to popular resources and dedicated sections for company news, announcements, bulletins and blogs, Homeport provides the business and employee support we all need to navigate EB and access the resources needed in our day-to-day work. The site is updated daily with news and announcements, and many of the bulletins that go out through email are also re-posted here. Homeport not only keeps you connected, but gives you the opportunity to explore upcoming events and get involved. The event calendar is always populated with upcoming events being held that you may be interested in.

**EB Landing**, EB's mobile site, was developed to help employees stay connected in a simple, easy-to-use way. When considering the large population of employees with limited access to a computer, it's easy to see the difficulty that some have with staying in the loop. Being a mobile site, EB Landing can be accessed from any device at any time, even if you're not on the EB network. EB Landing can be accessed from smartphones, tablets, PCs, and laptops. The site offers resources such as weather and emergency alerts, special announcements, tax and benefits information, company news and all of the leadership podcasts, as well as a running list of EB's COVID cases. The easiest way to use EB Landing is by creating a bookmark on your device or adding the site to your mobile home screen – this will make it so the site shows up like an app on your device.

**Community News** is emailed to employees every Tuesday, and is a culmination of announcements and events from all of EB's employee organizations, in addition to other events taking place in the local community.

**Social Media** - If you haven't done so already, follow Electric Boat's social channels. Explore photos and videos from recent events and throwback images from EB history. Here you can also find important updates regarding storms and related closures or delays, especially come winter time. Have your friends and family follow too, as the channels are frequently updated with posts regarding hiring and job fairs that may be of interest to them.

**FOLLOW ELECTRIC BOAT SOCIAL MEDIA CHANNELS**

Facebook: General Dynamics Electric Boat

YouTube: GD Electric Boat

Twitter: @GDElectricBoat

LinkedIn: General Dynamics Electric Boat

Instagram: gdelectricboat

EB Landing: www.EBlanding.com

*\*Visit EB's social channels on your own time and on a personal device, as they cannot be accessed on the ElectricBoat network.*

### **EBQP Breast Cancer Awareness Shirts**

This year, the QP Fire Marshal Office team is has put together a shirt design for our shipbuilders for Breast Cancer Awareness month. The first round went so well, the online store has opened back up for more orders! The proceeds from the sales of these shirts will be donated to Pink Heals RI! Shirts are available in long or short sleeve, as well as hoodies, and can be ordered directly from the vendor and shipped to your home, or picked up!

Please visit the following link to order: [https://www.impactestore.com/store/c175/Electric\\_Boat\\_For\\_a\\_Cure.html](https://www.impactestore.com/store/c175/Electric_Boat_For_a_Cure.html)



### **Boat for Women at Electric Boat; Dive Right In!**

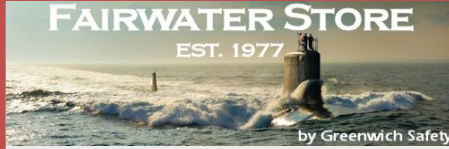
The 'Boat for Women' is a no-cost program that was developed to introduce women to manufacturing careers at Electric Boat!

Boat for Women offers both CT and RI sessions and is exclusively for women 18 years and older. Program sessions are six-classes -long and feature a class in each of the following trades: pipefitting, electrical, sheetmetal, shipfitting, welding and machining. This trade exploratory program is a great way to explore different trades and see if a manufacturing career is the move for you. This free program is open to women outside of EB, so encourage your friends and family to dive right in!

As Electric Boat begins their largest hiring efforts in the next ten years, programs like Boat for Women are supporting the advancement of a more diverse population at Electric Boat. EB has many opportunities for women to advance in their positions within the company, one of them being ForWARD. ForWARD (For Women's Advancement Recognition and Development) is a recently-formed Employee Resource Group (ERG) that encourages networking and mentorship opportunities, supports the advancement of women, increases the development and promotion of women into senior technical and leadership positions, and recognizes Electric Boat as a whole for their business and community contributions. EB is proud to continue to shine light on the impact women are making!

- For more information about Boat for Women, please reach out to Elle Goslin ([gosline@ewib.org](mailto:gosline@ewib.org)) for CT programs or Heather Lee ([hlee1@gdeb.com](mailto:hlee1@gdeb.com)) for RI programs.
- For more information about ForWARD, please email the team at [EBForWARD@gdeb.com](mailto:EBForWARD@gdeb.com).





**Deadline for CUSTOM CLOTHING order forms is coming up! Please get them in by 11/3 to get your items before the holidays!**



- Tons of boots!
- Carhartt & Timberland apparel!
- Custom order jackets, rainwear, boots, etc.

Hours of Operation

7:30 am to 4:00 pm

6:30 am (every other Wednesday)



**EB Weekly Safety Briefing**  
**Wk-43 10/31/21 – 11/06/21**



**Just because it is a task you've done many times, doesn't mean you should take any less precautions.**

**Protect your hands, Protect yourself, Wear the proper PPE for the task.**



**NOTE TO SUPERVISORS: Do your utmost to make any safety presentation relevant to your crew.**

**GENERAL DYNAMICS**  
Electric Boat

EBP 02852: Electric Boat Corporation has established Occupational Health and Safety as the Company's Number One Priority.

**Complacency will likely lead to injury!**

**Submit proof of vaccination to: [ProofOfCovidVaccination@gdeb.com](mailto:ProofOfCovidVaccination@gdeb.com)**

**ATTEND AN ANNUAL ENROLLMENT BRIEFING**

**Annual Enrollment for 2022 is November 17 through December 3, 2021**



The Electric Boat Annual Enrollment for employee benefits will be November 17– December 3, 2021. During this time, you will be asked to make your benefit elections for calendar year 2022. All employees will be mailed an enrollment package to their home address regarding plan options for medical, dental, vision, life insurance, etc.

Date	Time	Location	Room Status
11/4/2021	6:30 AM	Building 60 Cafeteria	Reserved
11/4/2021	1:45 PM	Building 60 Cafeteria	Reserved
11/4/2021	2:45 PM	Building 60 Cafeteria	Reserved
11/10/2021	4:00 PM	Adobe Connect	<a href="https://meeting.gdeb.com/quonsetae/">https://meeting.gdeb.com/quonsetae/</a>

Call in information for Adobe Connect: 866-244-1659, code 3375192238

**No Parking/Traffic Announcements**